

**01 Home**

POWERGLIDE PLC  
INTI LIMITED  
MILLBANK COURT  
WELLINGTON MILLS

**02 Work**

BRANDSMITHS LIMITED  
THE HEALTH FOUNDATION  
LONDON REVIEW OF BOOKS  
OMNIBUS LIMITED  
THE WORK FOUNDATION

**03 Health**

COMMUNITY HEALTH SOUTH LONDON  
GLOBAL HEALTHCARE RESOURCES  
KINGS COLLEGE HOSPITAL  
NAVIGATOR SECURITIES  
ROYAL BROMPTON HOSPITAL  
ST GEORGE'S HOSPITAL

**04 Highstreet**

BAKERS DOZEN  
LONDON REVIEW CAKES  
MIA RIGO  
WESLEY BARRELL

**05 Arts/education**

THE ACTORS CENTRE  
CEROC ENTERPRISES  
CIRCUS SPACE  
THE INTERIOR DESIGN SCHOOL

**06 Hotel**

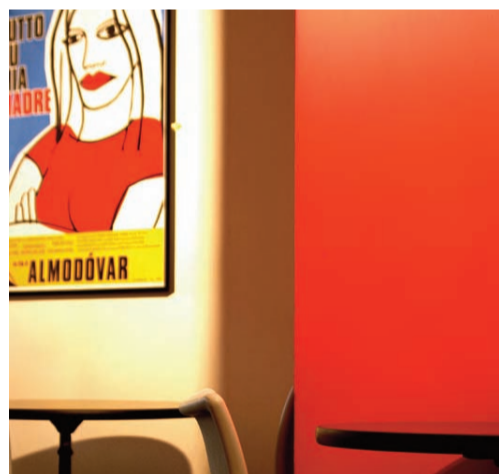
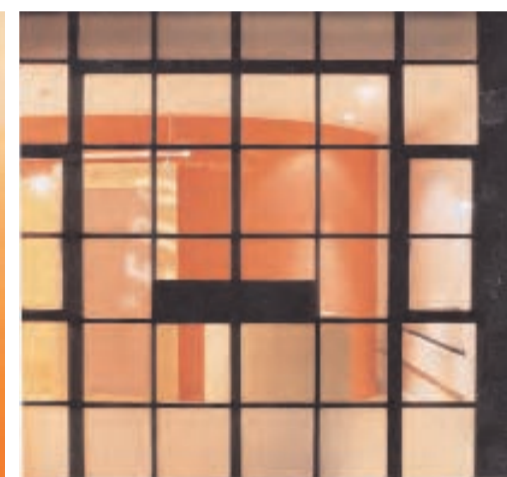
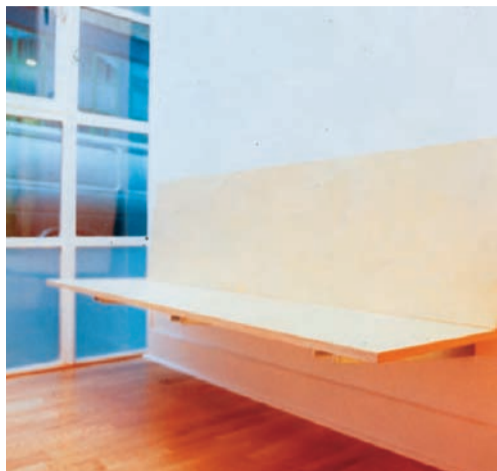
DREAM DESIGN & ARCHITECTURE  
GUEST INVEST HOTELS  
MY HOTEL

**07 Identity**

COVENT GARDEN ESTATES  
LEIGHTON GOLDHILL  
GOOD HARVEST  
NAVIGATOR SECURITIES

Mixing big ambitions and tight budgets these projects also offer a chance for creative collaboration; exchanging skills and resources is a unique part of the design process for these modern, adaptable and responsive buildings.

# 05 Arts/education



Dramatic colour and light projections at a converted mews dance company HQ.  
CEROC ●

Re-invented green room adaptably designed for workshops, castings, performance, and informal gatherings in-between.  
● ACTORS CENTRE

Swimming pool conversion to student bar.  
[Sheppard Robson Architects]  
UNIVERSITY OF WESTMINSTER ●

Mixed use North London design studio, lecture room and office space.  
THE INTERIOR DESIGN SCHOOL ●

Union entrance, refectory and library.  
[Morrison Culpin]  
BIRMINGHAM INSTITUTE OF ART + DESIGN ●



## Utility

26 Harrison Street London WC1H 8JW  
020 7833 3459/mail@utilityprojects.co.uk  
[www.utilityprojects.co.uk](http://www.utilityprojects.co.uk)